

LitterKat® Operating Instructions

We recommend that these instructions be read before attempting to use the LitterKat synthetic sweeper on your field. Synthetic sports turf installations vary widely and the information found here will help you understand synthetic turf sweeping, get the most out of your LitterKat and maximize the playability and safety of your field.

Assembly

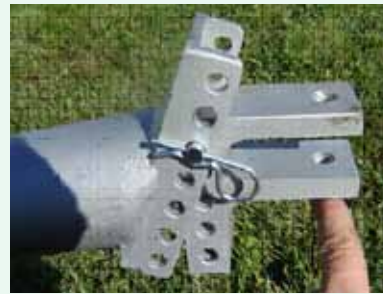
After the LitterKat has been removed from the crate, install the drawbar and wiring harness.

The drawbar is a completed assembly and ready to install. Just insert the non hitch end into the drawbar cuff located in the center top of the LitterKat frame. Use the 4" hitch pin provided to secure.

For long distance towing or towing over uneven surfaces, turn the drawbar upside down and reinsert in the drawbar cuff and secure. This will create about 8" of clearance under the LitterKat.

Hitch

By removing the lower clevis pin, the hitch is allowed to float so the drawbar can be used upside down for towing the LitterKat. (See photos below)



Adjustment

The wiring harness is shipped inside one of the baskets. The wiring harness is connected in three positions on the LitterKat. One lead is for the actuator while the remaining two are for the in-basket vibrators. Vibrator leads are found in the center of the LitterKat just below the drawbar cuff.

The wiring harness control box has 2 switches; one for the vibrators and one for the actuator. The vibrator switch will be an on / off switch whereas the actuator switch is a momentary rocker switch.

Use the supplied removable cable ties to secure the wiring harness cable to the drawbar. Place the control box near the driver's seat and attach the battery connections to your vehicle battery terminals or other 12V connection making sure that the Red connector is positive and Black is negative.

CAUTION: Allowing the cable to have much slack will cause the cable to drag on the ground and be caught in the brushes which will damage the wiring harness and / or the vibrators and actuator.

888-298-8852

www.greensgroomer.com

LitterKat® Operating Instructions - page 2

CAUTION: Before you start sweeping be sure the turf is dry. Wet infill material will stick to the perforated baskets and cause excessive build up of infill material in the baskets.

CAUTION: The LitterKat is 92" wide so be cautious around benches, goal post, etc.

Getting Started

Now that the LitterKat is hitched to your tow vehicle and the wiring harness is connected to 12v power, raise the LitterKat all the way up using the actuator.

When you're ready to start sweeping, set your tow vehicle in motion, turn on the vibrators and then lower the LitterKat. When you lower the LitterKat, you are lowering the brushes as well. When infill material starts to appear (like popcorn on the top of the baskets) the brush is at or close to the correct height. You will notice that the baskets are angled up and not level with the ground. Setting the baskets / brushes too low will result in picking up too much infill and the vibrators will not be able to keep up with the volume of infill being collected.

Every synthetic turf sports field is different; e.g. infill size, grass blade type, etc. You will need to experiment with the basket setting and forward speed for your field. The LitterKat has been designed to work with infill that is 3/16" or smaller. If the infill on your field is larger than 3/16" contact Greens-Groomer about an optional basket floor.

The LitterKat has two 36" nonflexible steel axles with two independent brushes. The brushes can only pick up debris on the surface. Any debris located in "low" areas will be missed. It is recommended that you groom your field first with the Synthetic Sports Turf Groomer and Spring Tine Rake to help eliminate low areas. Regular grooming will keep your field level and improve the playability as well the efficiency of the LitterKat. On a well maintained field, the LitterKat will pick up between 85% and 95% of surface debris.

In the event your synthetic turf sports field has previously had little or no maintenance performed, it may be necessary to go over your field more than once the first few times you groom and sweep for optimal results.

Fall leaves, and large amounts of confetti should be avoided because this type of debris will cover the perforated basket floor and may cause infill material to accumulate in the basket.

Sports Field Magnet

Your LitterKat comes with the Sports Field Magnet and is used to remove ferrous materials from within the synthetic turf. The towable magnet hitch is located just behind the actuator. The magnet should be cleaned after each use.

LitterKat® Operating Instructions - page 3

Debris Basket Cleaning	Cleaning out the baskets with the use of a shop type vacuum cleaner is recommended. Simply open the access doors on the top of each basket and vacuum out the debris. The baskets are designed to be removable by removing the 6 bolts on each basket, but for typical use it is recommended that you use the access doors for clean out of debris.
Maintenance	The LitterKat is almost maintenance free. Occasional oiling of the drive chains is all that is necessary. If the chain tensioners need adjusting, loosen the bolt securing the tensioner and using a pair of Channel Locks or a Crescent wrench, twist the tensioner (square blue part) and re-secure the bolt. The LitterKat is completely wash down safe with soap and water.
Trouble-shooting	<p>Actuator does not work - Check connections. Check voltage on tow vehicle. Voltage must be 12v and no more that 17v</p> <p>Picking up too much infill - Brushes set too deep. Leaves, loose fibers, etc blocking perforated bottom of basket. Turf is too wet. Infill is too large for stock perforated. Reduce or increase speed of cart. Not picking up debris Adjust brush depth. Surface is uneven and needs grooming. Brush is set too deep. Reduce or increase speed of cart.</p> <p>Vibrators not working - Check connections. Check voltage on tow vehicle. Voltage must be 12v and no more than 14v.</p> <p>Wheels not turning - Brush is set too deep and LitterKat is riding on the brush scoops.</p> <p>LitterKat bouncing or chattering - Brush is set too deep.</p>

If questions remain after attempting the above solutions, please call GreensGroomer at 888-298-8852