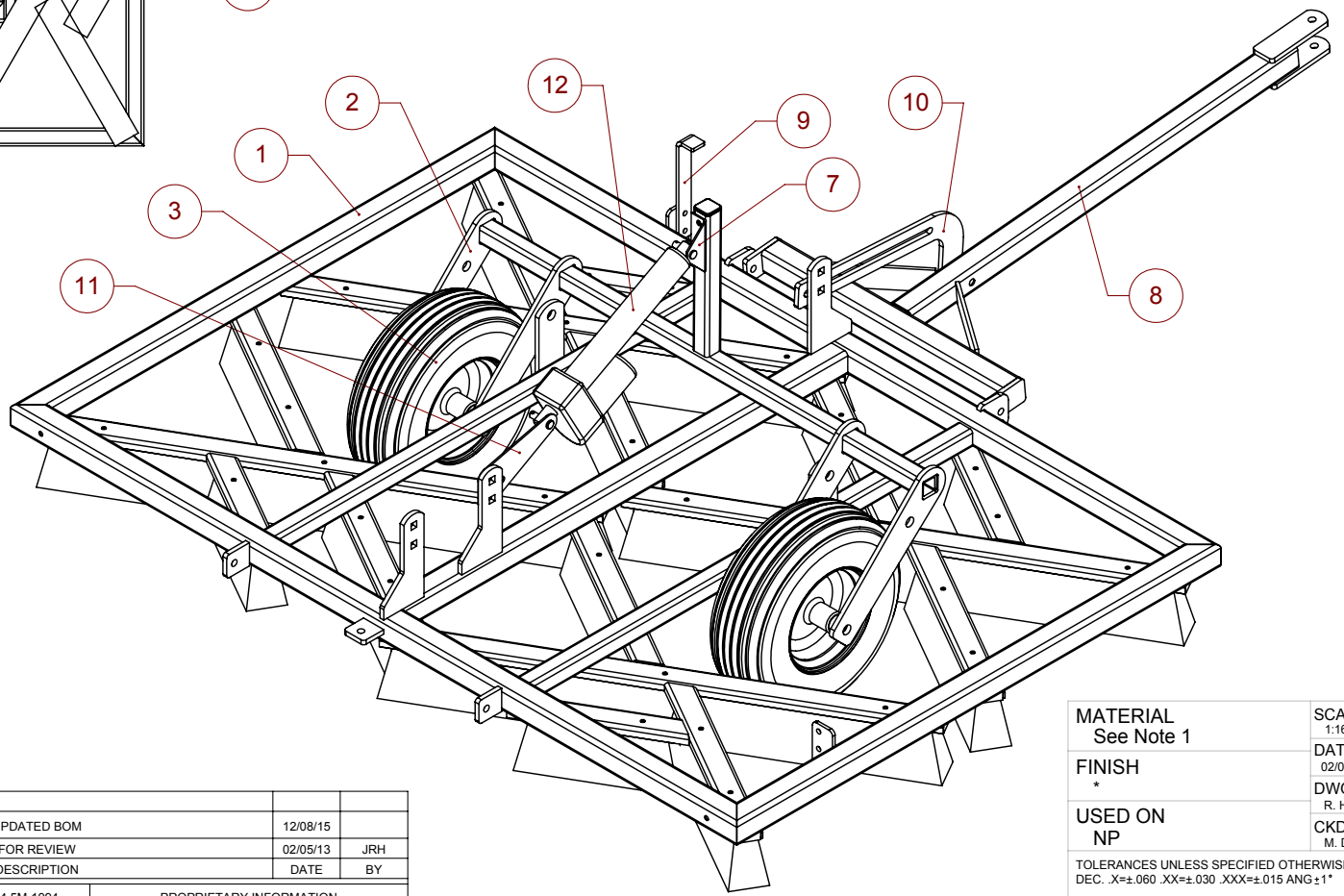
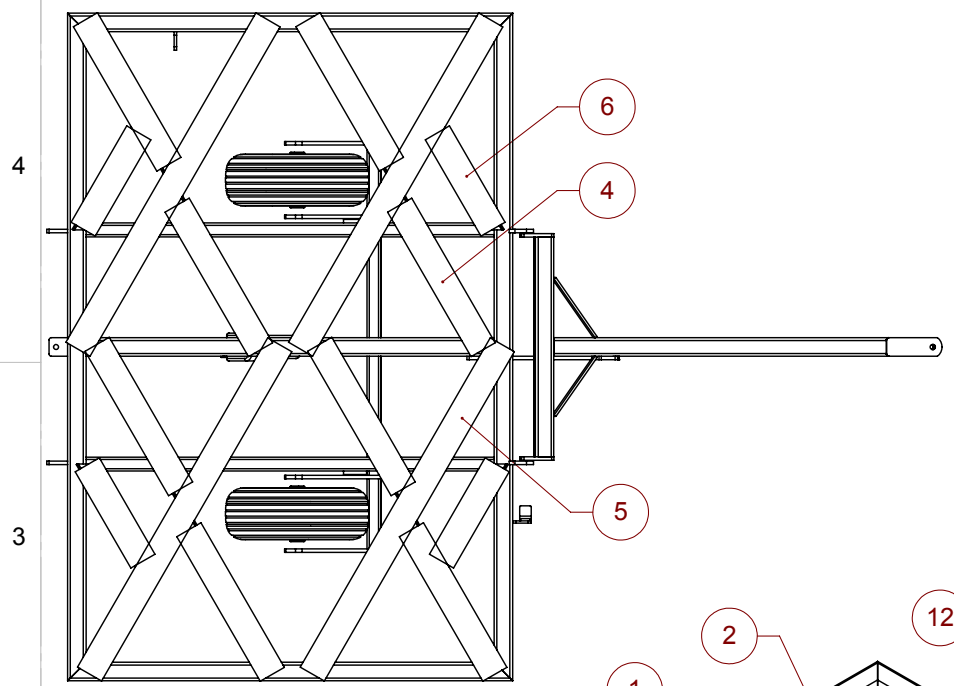
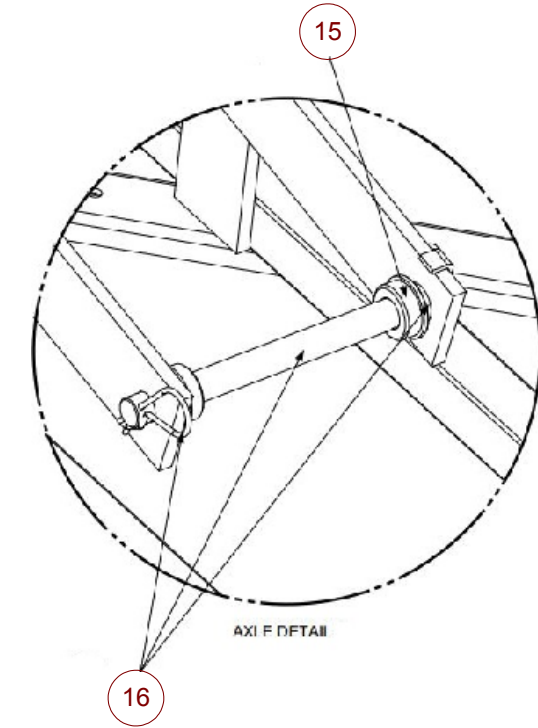
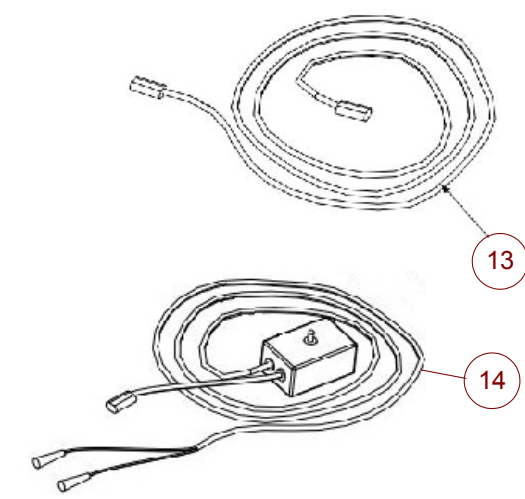


ITEM NO.	PART #	NAME	Default/QTY.
1	9201	GREENSGROOMER XL WELDMENT	1
2	9220	WHEEL LIFT WELDMENT XL	1
3	TWB	15 IN WHEEL	2
4	18 IN BRUSH	18 IN BRUSH	8
5	41-IN BRUSH	41-IN BRUSH	4
6	12 IN BRUSH	12 (11) IN BRUSH	4
7	7270	UPPER CYLINDER MOUNT	1
8	7230	DRAWBAR WELDMENT	1
9	7233	JACK STAND	1
10	7201	DRAWBAR ADJ. BRACKET	1
11	7272	LOWER CYLINDER MOUNT	1
12	ACT 1	8 IN ACTUATOR	1
13	ECC	REPLACEMENT CONTROL CABLE (18 FT)	1
14	RLC	ELECTRONIC LIFT CONTROL BOX	1
15	WRB	OIL IMPREGNATED WHEEL BUSHING	4
16	AXLE	AXLE KIT (AXLE, SPACER, BRIDGE PIN)	2



4
3
2
1

B		UPDATED BOM	12/08/15	
A		FOR REVIEW	02/05/13	JRH
REV	ECN	DESCRIPTION	DATE	BY
DIMENSIONS AND TOLERANCES PER ASME Y14.5M-1994		PROPRIETARY INFORMATION		
ALL DIMENSIONS IN INCHES UNLESS SPECIFIED OTHERWISE		DO NOT SCALE DRAWING		

MATERIAL: See Note 1
 FINISH: *
 USED ON: NP

SCALE: 1:16
 DATE: 02/05/13
 DWG. BY: R. HANSON
 CKD. BY: M. DAVIS

TOLERANCES UNLESS SPECIFIED OTHERWISE:
 DEC. .X=±.060 .XX=±.030 .XXX=±.015 ANG ±1°
 BURRS .003 MAX. BREAK ALL SHARP CORNERS .005R. MAX. OR .005 MAX. x 45° CHAMFER

INDIANAPOLIS INDIANA U.S.A.
 The Total Turf Conditioning Company

NAME: GreensGroomer XL Assembly
 DWG. NO.: 920
 REV B

SIZE B

FOLDER: C:\Users\James\Desktop\Parametric Customers\GreensGroomer\GreensGroomer\SolidWorks Files

A B C D E G